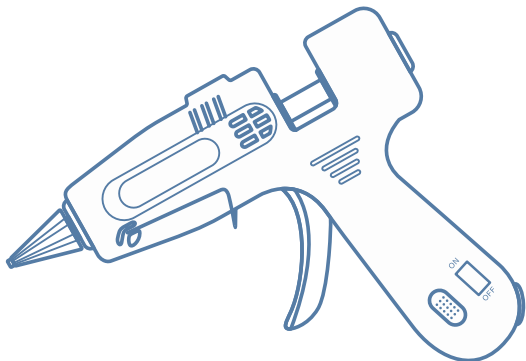




User Manual

Model No.: PN-G30



Mini GLUE GUN

30W

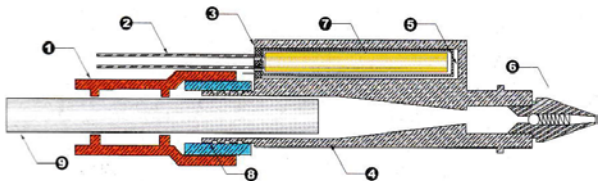
AC 100~240V/50~60Hz

HEAVY DUTY

Thank you for purchasing the **Hot Melt Glue Gun** by Ponii. Please read this manual carefully before using this product.

Features

- 1. Constant Temperature & Quick Preheating.** Built with high-tech ceramic PTC heater and electronically self-regulating system.
- 2. Compact & Solid Housing.** Made of 100% heat-resistant materials.
- 3. Built-in Safety Fuse.** With build-in fuse to prevent over-heat and can be used from AC 100V to 240V.
- 4. Larger Size and Long Trigger.** Designed with a larger size compare with other mini guns. Long trigger enables a good control of glue flow rate.
- 5. All-in-one Heat Body.** Integrated light weight body is more durable and has a longer lifespan.



- | | | |
|-----------------------|-------------------------------|--------------------|
| 1. Silicone Sleeve | 2. Lead Wire | 3. Sealing Stopper |
| 4. Aluminum Chamber | 5. Heating Chamber | 6. Nozzle |
| 7. Ceramic PTC Heater | 8. Integrate Plastic-Aluminum | 9. Glue stick |

Warning

To avoid electric shock or personal injury, read the “Safety Information” carefully before using the Glue Gun.

Safety Information

1. Be sure to read, understand and comply with all the instructions in this manual.
2. Before using this product, check to see if there is any crack or short of plastic parts on the shell. Please do not use the product if it is damaged.
3. **Do not touch the nozzle area and melted glue**, because they are under high temperature when working. Any direct body touch is prohibited.
4. **Supervise children**. Ensure that children do not play with the glue gun.
5. **Do not** use it at any flammable or explosive circumstance.
6. **Do not** raise the gun high or leave the nozzle upward when in working. The glue gun shall be positioned on its stand when not in use.
7. **Do not** abuse of inappropriate glue sticks that might lead to reverse flow of melt adhesive or cause damage.
8. Put the gun at a dry and ventilated place instead of humid or wet condition.

Operating Instructions

① Preparation Work

- Check workspace and walkways to ensure no slip and safe circumstance.
- Long and loose hair must be contained when operating this glue gun.
- Ensure the correct size glue stick is selected.
- Insert a **0.28" (diameter)** glue stick into the gun hose from the rear.

② Power on /off

Directly plug the glue gun into the power supply socket, and switch power button to “ON” position, then unit will start to work. Switch off or disconnect the power supply to shut down.

Note: Slight smoke may appear after switching on for the first time. This does not indicate any problem. After a few minutes, the smoke should auto disappear.

③ Preheat Stage

After power on, you need to wait **3-5 minutes** for glue gun to heat up.

④ Melt Glue Flow

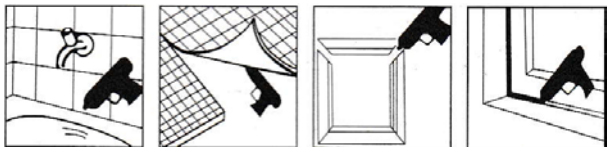
After preheat, pull the trigger and squeeze, the melt adhesive will come out. When a glue stick become too short to squeeze, please add a new one at the rear to continue the process.

⚠️ IMPORTANT:

1. Do not leave the switched-on glue gun unattended. Please switch off the gun if it is not used for more than 20 min, otherwise, the adhesive might flow inversely and damage the gun.

3. Please DO NOT try to pull out the remained stick at the end of use, otherwise, it may damage glue gun severely. The remainder can be used directly next time.

1. Repair a leak or crack as waterproof material in bucket, rain gutter, etc.
2. Adhere or joint two work pieces when repair furniture, fix electrical wire, install floors, fix toy and model, etc.
3. Seal cartons or any other packages.
4. Applicable for different surfaces, such as wood, plastics, foam, fabrics, paper, cardboard, ceramics, etc.



Package Content

- 1 x PN-G30 Hot Melt Glue Gun
- 1 x User Manual

Warranty

The warranty period for quality related issues of this product is one year. If the device does not operate properly or has any other faults, please always feel free to contact Ponii Customer Service at any time. We will provide you with best service and do our best to help you out.